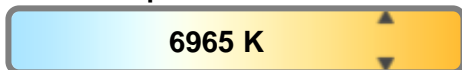


Color Temperature:



**Total Lumen Output:**  
**11098 lm**

Light Quality:

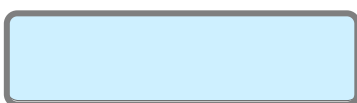


**Peak:**  
**11070099**

Light Efficiency:



**Power: 422 W**



CIE 1931  
x: 0.307  
y: 0.315

**Test: Beam Zoom In**

**Date: 7/27/2018**

**Voltage: 116 V**

**Current: 3.64 A**

**Frequency: 60 Hz**

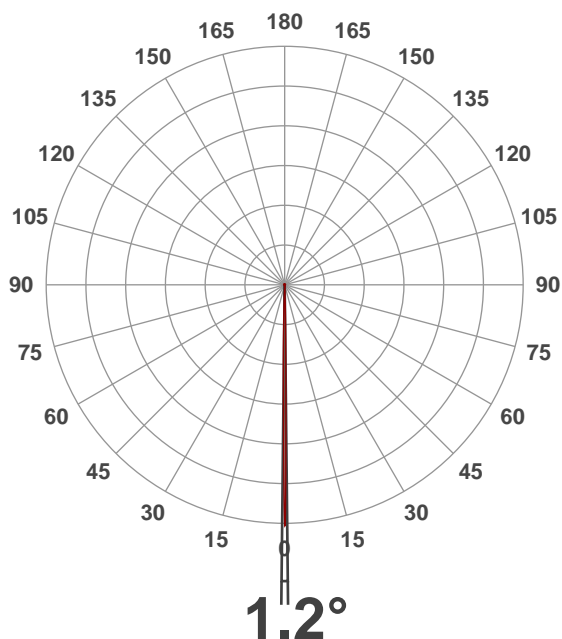
**CRI: 75.8**

**CQS: 71.2**

**TM30: 75.2**

**Note:**

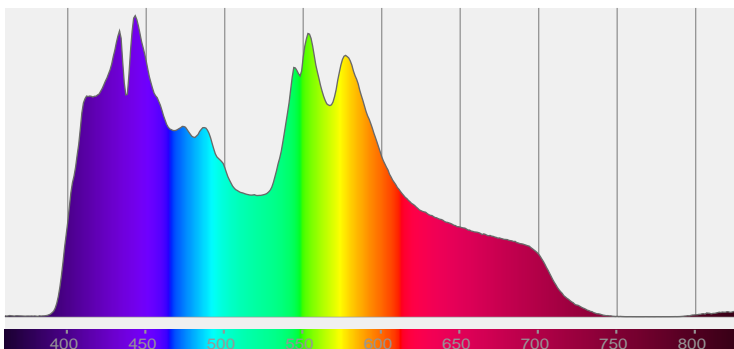
**Beam Angle**



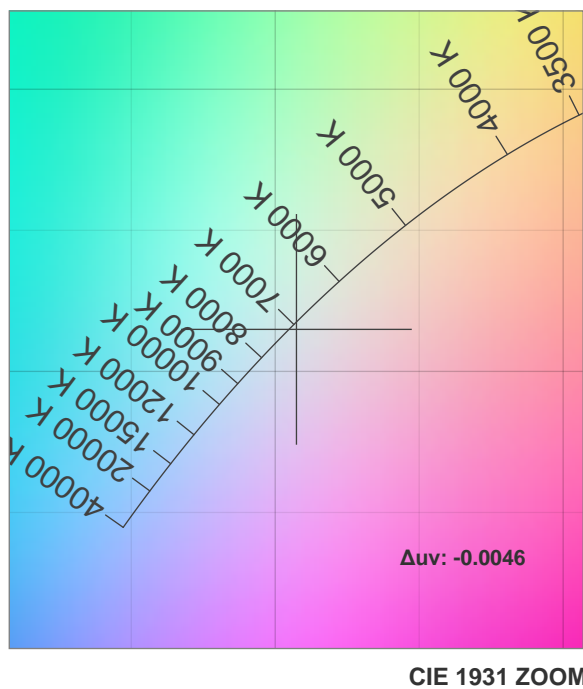
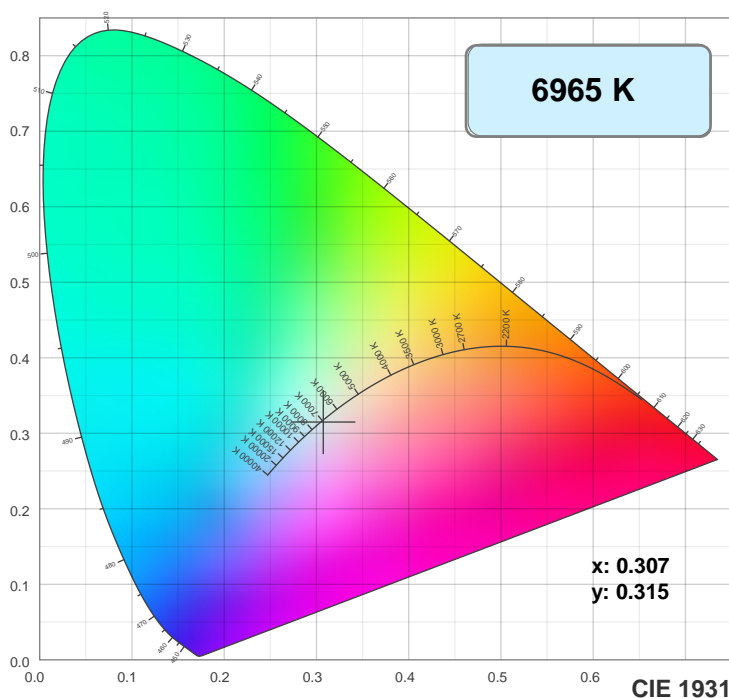
Beam Angle 50%	Field Angle 10%	Cutoff Angle 2.5%
1.2°	3.4°	4.1°

**Spectra**

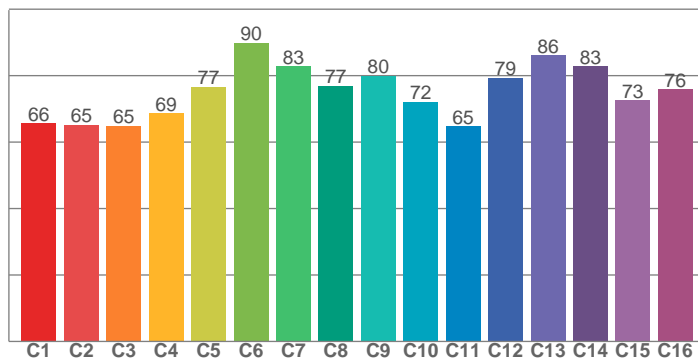
**Dominant Wavelength: 360nm**



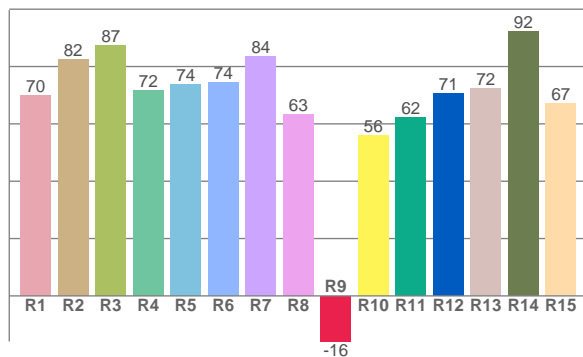
## Color Details



**TM30: 75.2**



**CRI: 75.8 (R1-R8)**



CRI R values, only R1-R8 are used to calculate final CRI value

R1	R2	R3	R4	R5	R6	R7	R8	R9	R10	R11	R12	R13	R14	R15
70.0	82.5	87.2	71.8	73.7	74.5	83.5	63.3	-15.9	55.9	62.3	70.8	72.4	92.2	67.0

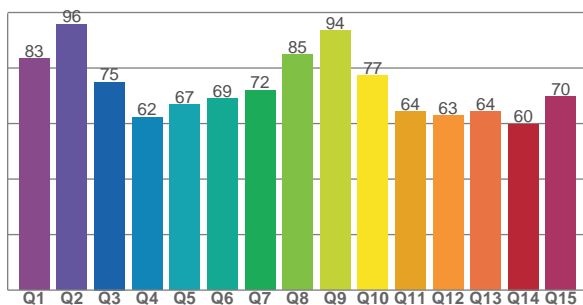
TM30 C Values, 16 binned values out of total of 99 C values

C1	C2	C3	C4	C5	C6	C7	C8	C9	C10	C11	C12	C13	C14	C15	C16
65.7	65.2	64.9	68.7	76.7	89.8	82.8	77.0	80.0	72.1	64.7	79.3	86.1	82.8	72.6	75.9

QQS Q Values

Q1	Q2	Q3	Q4	Q5	Q6	Q7	Q8	Q9	Q10	Q11	Q12	Q13	Q14	Q15
83.4	95.8	75.0	62.2	66.9	68.9	72.0	84.8	93.5	77.2	64.3	62.8	64.2	59.9	69.6

**CQS: 71.2**



## Color Parameters

Color Temperature	Color Rendering Index	Red Component	Color Fidelity	Color Gamut	Color Quality Scale	Color Coordinate CIE 1931	Color Coordinate CIE 1931	Color Coordinate	Color Coordinate	Color Deviation from Black Body
CCT	CRI	CRI R9	TM30 Rf	TM30 Rg	CQS	x	y	u	v	Δuv
6965 K	75.8	-15.9	75.2	91.4	71.2	0.307	0.315	0.199	0.307	-0.0046

## TM30 Details

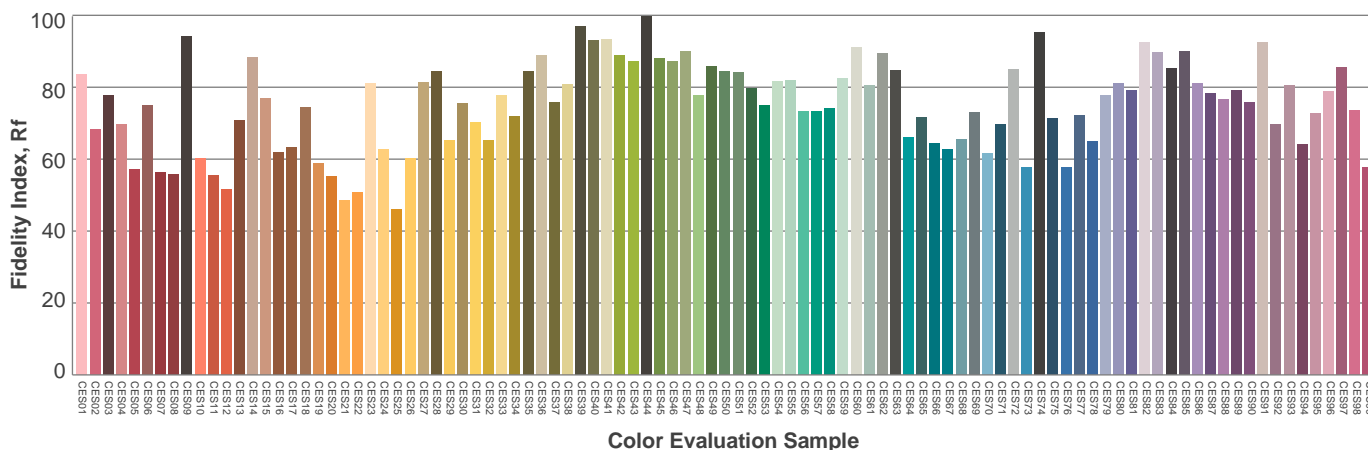
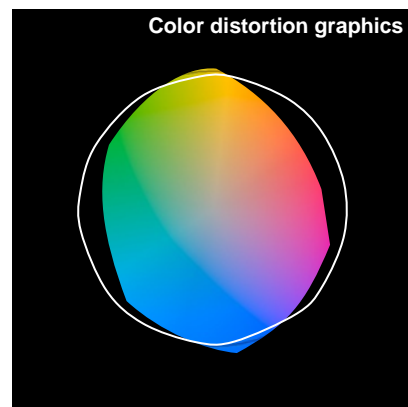
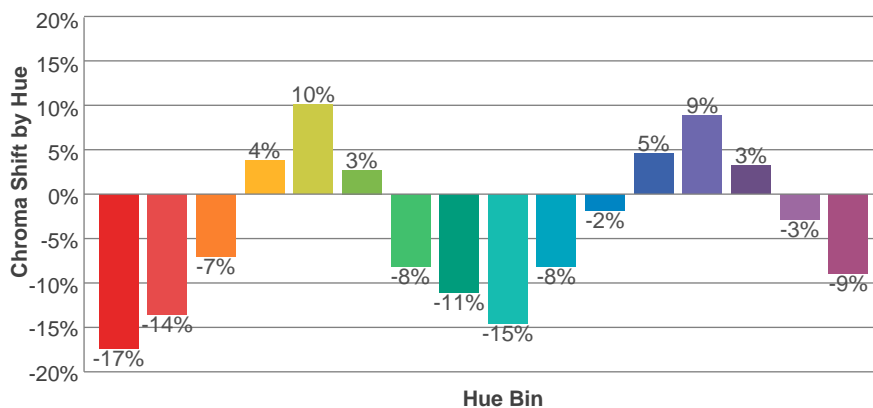
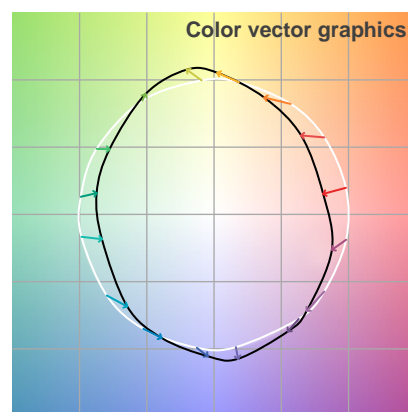
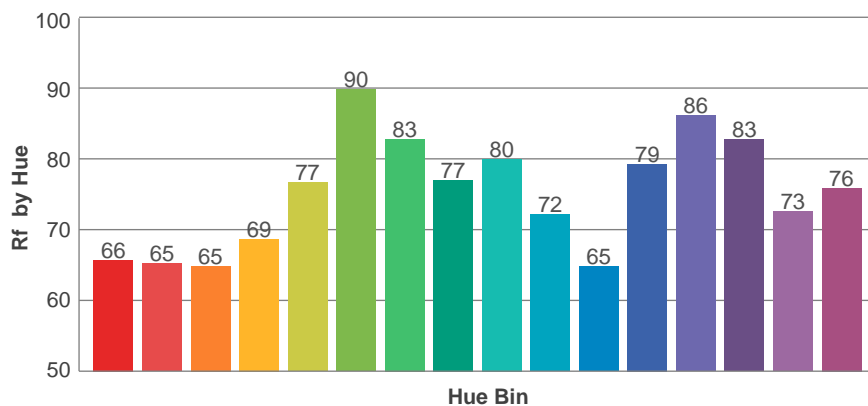
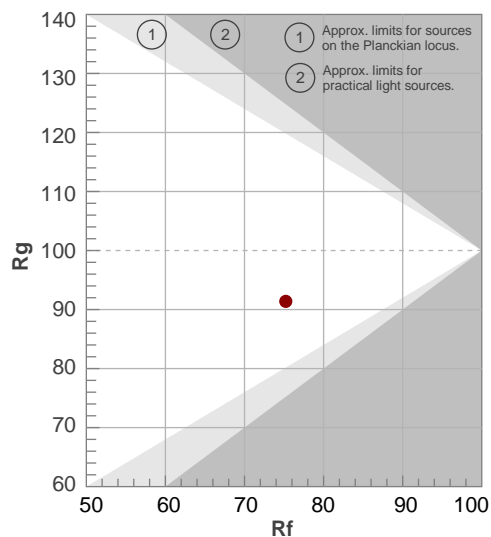
**Rf 75.2**

Fidelity Index Rf

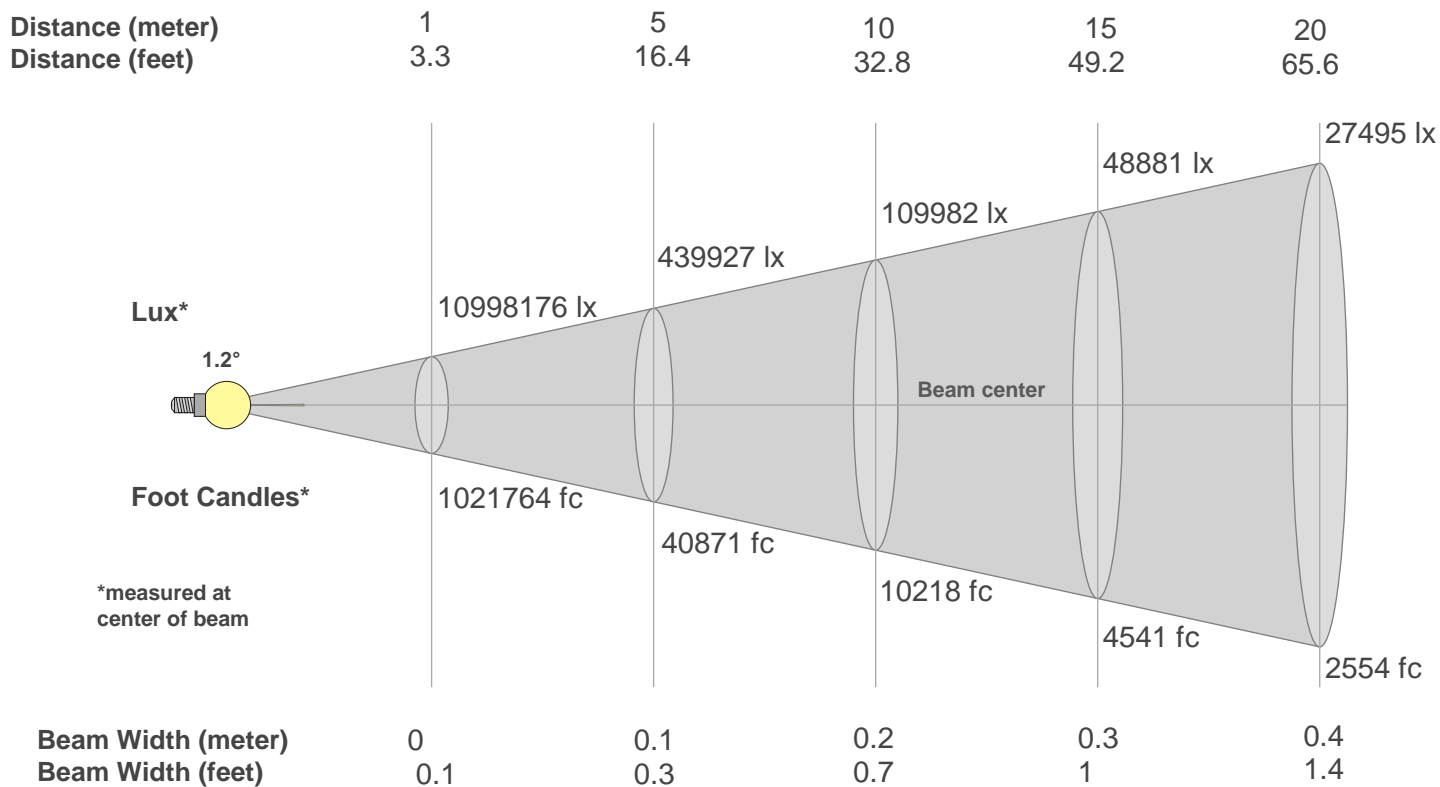
**Rg 91.4**

Gamut Index Rg

Hue Bin	R <sub>f</sub>	Graphic shifts (%)	
		Chroma	Hue
1	66	-17%	-1%
2	65	-14%	11%
3	65	-7%	19%
4	69	4%	17%
5	77	10%	9%
6	90	3%	-5%
7	83	-8%	-5%
8	77	-11%	-5%
9	80	-15%	5%
10	72	-8%	15%
11	65	-2%	15%
12	79	5%	9%
13	86	9%	0%
14	83	3%	-12%
15	73	-3%	-19%
16	76	-9%	-9%



## Beam Details



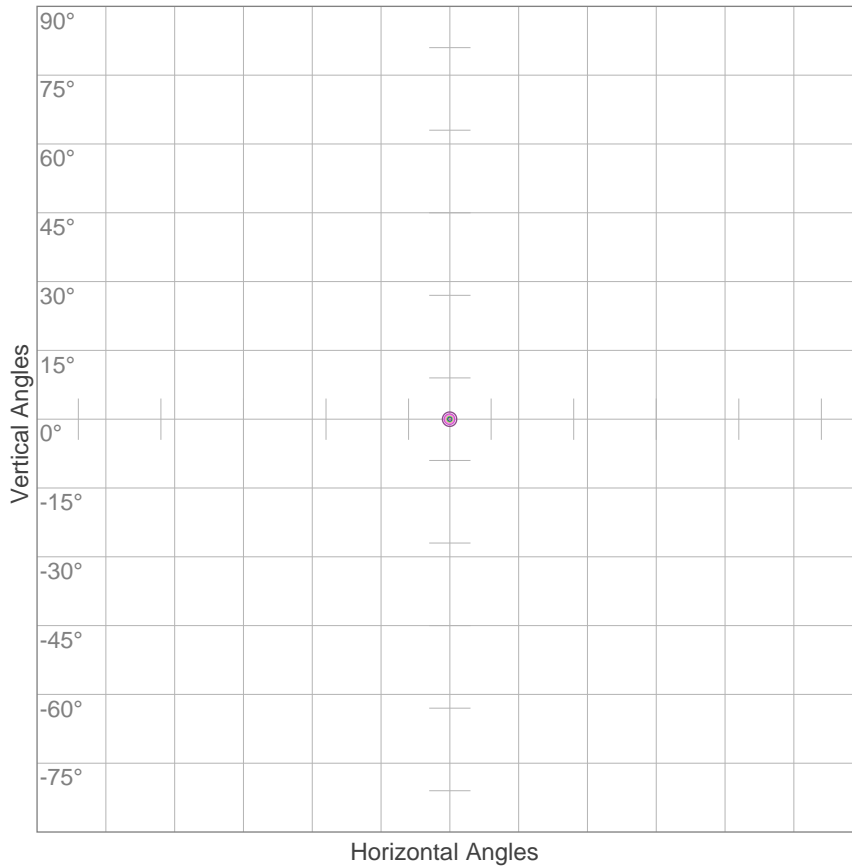
Beam Intensities from 1-20m

m	1	2	3	4	5	6	7	8	9	10	11	12	13	14	15	16	17	18	19	20
ft	3.3	6.6	9.8	13.1	16.4	19.7	23	26.2	29.5	32.8	36.1	39.4	42.7	45.9	49.2	52.5	55.8	59.1	62.3	65.6
lx	10998176	2749544	1222020	687386	439927	305505	224453	171846	135780	109982	90894	76376	65078	56113	48881	42962	38056	33945	30466	27495
fc	1021764	255441	1135293	638602	408706	283823	208523	159651	126144	102176	84443	70956	60459	52131	45412	39913	35355	31536	28304	25544

Beam Angle 50%	Field Angle 10%	Cutoff Angle 2,5%	Intensity Ratio in 120° Cone	Intensity Ratio in 90° Cone
1.2°	3.4°	4.1°	89.9%	88.5%

## ISO Diagrams

### ISO Candela Diagram



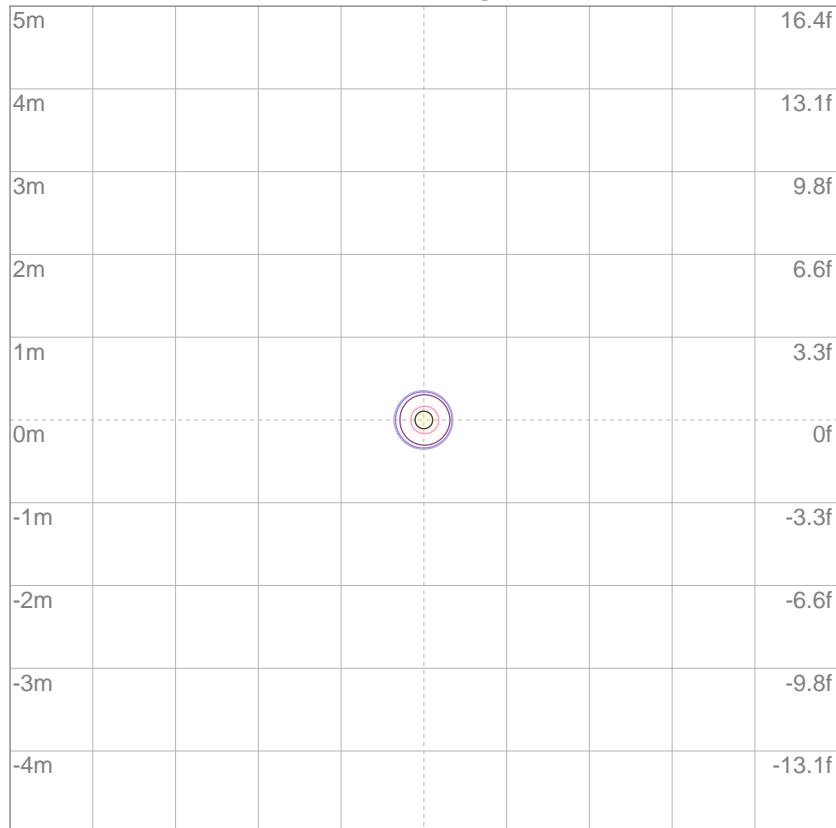
10%	1099818 cd
20%	2199635 cd
30%	3299453 cd
40%	4399270 cd
50%	5499088 cd
60%	6598905 cd
70%	7698723 cd
80%	8798540 cd
90%	9898358 cd

#### Conditions:

Number of c-planes: 2

Candela at center: 10998176 cd

### ISO Lux Diagram



Mounting Height: 10 meters (33 feet)

3%	3299 lx
5%	5499 lx
10%	11.0K lx
30%	33.0K lx
50%	55.0K lx

#### Conditions:

Number of c-planes: 2

Lux at center: 110K lx

*Lux distribution on a surface  
when lamp is mounted at 10  
meters from the surface.*